



2023

# Annual Report



Falcon Primary School

Show Respect | Own Responsibility | Act Safely | Rise with Resilience

# Introduction

FALCON PRIMARY SCHOOL ANNUAL REPORT 2023



The Falcon Primary School Annual Report for 2023 provides an opportunity to share the year's progress and achievements with the school community.

This includes reflecting on the school's performance and explaining the positive impact of school improvement efforts on student outcomes.

Our 2023 Public School Review acknowledged our strengths in the Learning Environment, Relationships & Partnerships and Use of Resources domains. We were commended for:

- the strong relationships and partnerships that have been established with the community. This authentic collaboration has cemented the community's trust in the school with a united purpose and investment in providing all students with a positive and productive pathway to future success.
- creating a sense of belonging through the establishment of a welcoming and safe environment which supports students' enjoyment of school. Students are enthusiastic advocates for the school's caring, inclusive ethos delivered through a visibly strong partnership between staff, students and families.
- underpinned by a collective desire to improve, leadership structures, reflective processes, block teams and professional learning are guiding staff to understand and participate in shaping future directions of the school.
- the intent to align the priorities of the budget with the imperatives of the business plan and consideration to the specific needs of individuals and groups of students. Human and financial resources are expended prudently and flexibly applied based on evidence of the needs of students.
- the commitment to establish a performance culture around low variance, evidence-based, whole-school approaches where staff share ownership for the success of all students.
- an acute awareness that students are not achieving to their potential is driving a united and determined resolve by staff to ensure a collective response for all students to make continued and sustained progress.

Teaching Quality, Leadership and Student Achievement & Progress domains require greater focus and we will be operationalising a range of strategies to ensure significant improvement in these areas. I look forward to strengthening our focus on Teaching Quality and Leadership in 2024 as we implement Talk 4 Writing, modify our approach to teaching mathematics and document our agreed approach to explicit instruction. I am excited to announce a new leadership team of staff who are taking responsibility in key areas including Literacy (Mrs Karyn Mort), Numeracy (Mrs Leanne Northey), High Impact Instruction Y3-6 (Mrs Jen Humble), High Impact Instruction K-2 (Ms Clair Foulkes) and Student Support (Mrs Karyn Mort). Teaching and learning is our core business and I look forward to a greater focus on supporting our teachers to improve their practice via professional learning, demonstrations and coaching, as well as supporting students in Literacy, Numeracy and expanded intervention programs.

In this year's Annual Report (pages 22-25) we are able to present to the community the performance of students at Falcon Primary School in NAPLAN. Please note in 2023 NAPLAN testing moved from Term 2 testing to Term 1 testing and the NAPLAN scale was reset. This means that we can't compare NAPLAN achievement prior to 2023 to that from 2023 onwards. The 2023 data compares the performance of students at Falcon Primary School to our Like Schools and WA Public Schools.

Attendance data for 2023 demonstrated an increase in the rate of regular attendance which saw Falcon Primary School exceed the performance of our Like Schools and the WA Public Schools average. The rate of attendance for Aboriginal students at Falcon Primary School far exceeds our Like Schools and WA Public School averages and our attendance rate in each year level for all students equals or exceeds the WA Public School rates.

Our School Culture Survey data demonstrated improved parent, student and teacher perception, with positive feedback from all groups surveyed. Parent participation in the survey was significantly higher than previous years and demonstrates increasing engagement and support from our parent body.

2023 was yet another year in which we provided our students with varied and vast opportunities in academic, social/emotional, arts, sporting and cultural domains. None more so than Falcon PS winning the Interschool Athletics Carnival in A Division with several of our students taking out Champion and Runner Up Champion medals. A snapshot of the many and varied activities and events of the 2023 school year have been captured as "Highlights" and photographs from the year.

We have made significant progress with our PBS (Positive Behaviour Support) program in 2023 with the inception of our school wide behavioural expectation matrix, PBS characters and school wide PBS lessons and videos. We also implemented a new behaviour management strategy via 1,2,3 Magic and Emotion Coaching with whole staff training in this program. We look forward to continuing our PBS journey in 2024 with a new reward and incentive scheme, a new App to monitor and record positive behaviours and new Honour Certificates based on our PBS expectations which incorporate our fabulous PBS characters.

Mrs Annels has led the Environmental Science program in 2023, acquiring a

grant to improve our garden area as well as achieving recognition as a Waste Sorted School. Falcon Primary School was acknowledged by Local Member for Dawesville Lisa Munday at the recent community Environmental Expo which Mrs Annels was invited to present at with several of our student Eco Warriors. Mrs Annels initiated Waste Free Wednesdays and established a team of student Eco Warriors who have been passionate about improving the school. The Eco Warriors have worked together to enhance the school garden, planned, set up and monitored Falcon's Waste Station and worked with staff in the ECE area to set up a worm fridge, composter and garden of their own. The Eco Warriors are also responsible for teaching one student from each of those 5 ECE classrooms every Friday how to look after their worms, process the scraps, water and maintain their garden and composter. We are excited to continue these initiatives into 2024.

Our dedicated P&C facilitated a range of fundraisers in 2023 including the Cold Play ticket raffle, raising \$35,000 to direct back towards our school. Our P&C has struggled for numbers over recent years. The P&C relies on volunteers and they are seeking as much additional support as possible to sustain the second hand uniform shop and their many other fundraising endeavours. If you have even just one hour per week to spare to give back to our school, please let our President Caroline Cassidy or the school office know of your availability to help. We are calling for class representatives in 2024 to boost our parent numbers on the P&C.

In 2023 we installed a new sound system and screens to the undercover area. This cost in excess of \$30,000 with a generous donation of \$6000 toward this from our P&C. We also purchased new chairs for the undercover area, again with funding from our P&C. Our reprographics room was converted to include a private meeting room and our administration area received a paint refresh. Two of our Pre Primary classrooms received new furniture as well as new stools for the Science lab. Our Art room underwent a full refurbishment with new benching, tiling and flooring. It has also been refreshed with new furniture. Over the vacation period we had a range of games painted on the concrete in the ECE and Year 1 playgrounds to provide additional activities for students. In addition we installed 3 new touch screen panels to classrooms during the 2023 school year as we move away from projector screens to more modern technology.

These upgrades in 2023 are symbolic of our school revitalisation efforts and I look forward to bringing about further improvements to our learning environment in 2024.

The 2023 school production of Aladdin Junior was a huge success and I thank Mr Chaudhry for the countless hours of rehearsals that went into this very enjoyable event. It was fantastic to see so many students involved as well as parents and grandparents in the crowd supporting their children and our school. It was a fabulous way to round off the school year and in the lead up to Christmas it was so heartening to see the generosity of our parent community with their donations of toys, books, games and non perishable food items to support those less fortunate in our community.

Our Kindergarten Orientation for new students was very successful with the inception of our Leap into Learning Program which gave students and parents a taste of the Kindy program. We thank our new Kindy parents for their attendance at both the Information session and the Leap sessions as well as the very positive parent feedback provided. We are excited to welcome many new families to Falcon Primary School in 2024.

We held a Thank You Morning Tea to acknowledge the contributions of our parent volunteers, P&C representatives, School Board members, Award Sponsors, Ed Connect mentors and Story Dog volunteers. We have such incredible support from our wider community. We truly have a great sense of true community and support at Falcon PS. Personally, and on behalf of our school, I cannot thank our volunteers enough, for their generosity, time, energy, donations and sense of community. We are so very lucky to have their support.

The Public School Review in 2023 has provided Falcon Primary School with some clear recommendations for improvement. With the ongoing commitment of our teaching and non-teaching staff and the support of our parents and wider community, I am confident we will make great gains in our provision of quality teaching, an expanded and strategic leadership structure and most importantly improved student achievement and progress.

**Jacque Abbiss** Principal  
**Peter Randell** School Board Chair

# Highlights

## Academic

- Student Representative Council Election and Speeches
- Art Folder Competition
- Shaun Tan Award for Young Artists
- Premier's Reading Challenge
- National Simultaneous Story Time
- Keep Australia Beautiful/Clean Schools Poster Competition and Bin Stickers
- Speak Up Awards Y5/6
- Positive Behaviour Support Launched SOAR
- Leap into Learning Kindergarten Transition Program
- Presentation Assembly
- Y6 Graduation Assembly
- NAPLAN Testing Y3 and Y5 in Term 1
- GRIP Student Leadership Conference
- On Entry Testing Pre Primary
- Letters & Sounds Program K-2
- Mandurah Junior Council Representation - Zoe T and Sean T
- Whole School Tables Challenge
- PEAC Testing
- Minilit intervention for literacy
- Macqlit intervention for literacy
- Book Week Story Time with the Principal - Paperbag Princess
- Book Week Staff Play - Super Red Riding Hood
- Book Week Bring your favourite book to school

## Facilities

- ECE Sandpit Top-up
- P&C Funded 98 Assembly Chairs
- Two new 75 inch interactive screens to Pre Primary and Y6 Classrooms
- New Furniture Science Room - Stools
- New height adjustable desks Pre Primary
- Admin meeting room created and office repaint
- New audio visual equipment to undercover area
- Art room refurbishment
- New furniture art room
- New sea container for storage
- Groundsplash games to ECE

## Sporting

- Faction Captain & Vice Captain Elections
- Y5/6 Winter Sport
- Interschool Cross Country
- Champion Jumps & Throws
- Faction Athletics Carnival
- Lightning Carnival
- K-P Obstacle-a-thon
- Interschool Athletics Carnival
- Intern Swimming Lessons PP to Y2 MARC
- Y 5/6 Interschool Cricket and Bowls
- Y3-6 Swimming Avalon Beach
- Y5/6 League Tag
- Y 5/6 Docker's Cup

## Camps, Excursions, Incursions & Fundraisers

- Student Council Cuppa with the Principal
- Falcon's Fantastic Fertiliser Sales
- Containers for Change
- National Ride2School Day
- Year 2 Reap the Rewards Excursion Avalon Beach
- Wastesorted Incursion
- Woolworths Miami Donation 19 Chiller Bags for Classroom Lunch Order Bags
- P&C Pyjama Day Fundraiser
- Men of the Trees Dune Preservation Seedlings Planting Avalon Bay
- Farmer Mick Visit Kindergarten and Pre Primary Incursion
- Constable Care Incursion
- Kindy Clay Work with Simone
- Science Week Silly Scientists Science Show Incursion
- WAGSMS Concert MPAC
- Silver Threads Band Incursion
- Y6 Parliament House Visit with Lisa Munday MLA
- River Guardians Incursion - Dolphins
- Water Corporation Science Incursion
- Y6 Forest Edge Camp
- Y2 Students Mandurah Museum Excursion
- Halls Head College Principal Mrs Bronwyn White Visit Prop Production
- Class of 2023 Graduation Lunch - The Cut Golf Course
- Y6 Adventure World Excursion
- OVIS Kids Against Violence Incursion
- Bullyzone Incursion
- Scholastic Book Fair
- Bike Education
- Jeans for Genes Day Staff Fundraiser
- Daffodil Day Staff Fundraiser
- Break A Rule Day P&C Fundraiser
- Science Expo Halls Head College Y5 Students
- Wear Red for Daniel Day
- Y4/5 Laser Tag Incursion
- Mandurah Museum Excursion Y2
- Community Environmental Expo with Lisa Munday MLA

## Culture & Wellbeing

- Harmony Day Celebrations - Family Picnic
- Falcon PS Breakfast Club Sponsored by Coles and Foodbank
- NAIDOC Celebrations - Wadumbah Aboriginal Dance Group
- NAIDOC Murals
- RUOK Day Event - Coffee Van, Community Guests, Second Hand Uniforms, Raffle, Tea & Coffee in the Library
- Education Assistant Appreciation Week
- Thank You Cleaner Day
- Day for Daniel wear Red
- World Teachers' Day
- WA P&C Day Morning Tea
- Smiling Mind Mindfulness Program
- Student Wellbeing and Engagement Survey for Year 4 Students
- Staff Shirts Aboriginal Design
- Dental Health Screening
- Australian Primary Principals' Day
- Community Remembrance Day Representation Dawesville

## School Community

- Trish & Mick Tragenza Compost Tumbler Donation
- P&C Free Dress - Wear Your Clothes Inside Out Day
- P&C TerraCycling Recycling Program
- P&C Second Hand Uniform Stall
- P&C Easter Raffle
- P&C End of Term Sausage Sizzle
- P&C Mother's Day Stall
- ANZAC Day Memorial Service
- Volunteer Thank You Morning Tea
- Gilbert Peel School Program
- Port Quays Deli Lunch Pre Orders Trial
- Eyes at Optometry Free Vision Screening
- Walk Safely to School Day
- Waste Free Wednesday - School Recycling
- Recognition as a Waste Sorted School
- 1-2-3 Magic and Emotion Coaching Information Session for Parents and Carers
- Champion Store Voucher Winners announced (8 families x \$100 gift voucher ea)
- Woolworths Junior Landcare Grant \$1000
- Woolworths Environmental Science Grant
- High Pressure Clean ECE Jason Rooke and Lingling Zhang
- Containers for Cash Initiative
- P&C Father's Day Stall
- Falcon's Waste Station Undercover Area
- Lisa Munday MLA Bunnings Vouchers - Environmental Science Eco Warriors
- National Tree Planting Day
- P&C Pre Loved Book Stall Fundraiser
- P&C Cold Play Tickets Raffle Fundraiser
- Referendum P&C Sausage Sizzle Fundraiser
- Donation 16 Soccer Balls - L & S Smith
- Donation Tonka Trucks for Block 2 - Mansfield & Wheeldon families
- Remembrance Day Wreath Dawesville Memorial
- Aladdin Jnr Performance and Family Picnic
- Kindergarten End of Year Celebration Picnic
- Christmas Collection for local charities (Peel Community Xmas Appeal, Westaus Crisis and Hands Up Team)
- Falcon Lions Club Santa Visit to Kindy
- Santa Mail
- Book Week Dress Up & Parade
- P&C Annual General Meeting
- Parent Meet & Greet Sessions
- Homestyle Flooring donation class mats
- WAGSMS Concert
- Taiko Drumming Incursion
- Gear for the Homeless Donations
- PBS Mascot Drawing Competition
- School Culture Survey Parents and Staff
- Public School Review
- TheirCare on Site Before & After School Care Agreement Renewal



# Learning Area Reports

## Literacy

Falcon Primary School continued with a priority curriculum focus on Literacy in 2023.

### Major strategies in Literacy included:

- Teachers continued to use the West Australian Curriculum to plan, assess and report.
- The ongoing development and commitment to the Falcon Primary School scope and sequence curriculum planning documents in phonics, spelling, handwriting and writing.
- Teachers collaborating with year level colleagues to plan, create, implement, teach and assess high quality literacy lessons.
- Utilising assessment data to reflect on and inform teaching practice.
- Continuing to build teacher resources and student resources in reading, writing and phonics.
- Providing Professional Development opportunities to upskill staff in Letters and Sounds, Peggy Lego and Talk 4 Writing
- The implementation of a wide range of class-based strategies that included:
  - Continuing to develop high quality Literacy Daily Reviews.
  - Implementing Letters and Sounds in Kindergarten, Pre-Primary, Year 1 and Year 2.
  - Continuing to implement Heggerty in Kindergarten, Pre-Primary, Year 1 and Year 2.
  - Continuing to implement Sound Waves Spelling program from Year 3-6.
  - Continuing to implement Talk 4 Writing in Pre-Primary-Year 2.
  - Continuing to implement Seven Steps in Writing Success and Talk 4 Writing in Year 3-6.
  - Using NAPLAN resources and questions within teaching practice to ready our students.
  - Participating in the Phonics Initiative assessment in Year 1.
  - Utilising Little Learners Love Literacy and Letters and Sounds assessment tools in Kindy, Pre-Primary.

### Year 1 and Year 2

- Continuing to implement MiniLit as an intervention program Year 1 and Year 2.
- The initiation of Letters and Sounds Intervention in Year 3-6.
- Participation in the National Simultaneous Storytime.
- Participation in the Premier's Reading Challenge.
- Book Week activities including a Book Week parade, staff play and Book Club competition.
- Speak up event for Year 3-6.
- Various incursion and excursions.
- A range of tutoring programs utilising volunteers across the school including Story Dogs.

# Numeracy

Our approach to the teaching of Numeracy was reviewed with the aim of developing a whole school pedagogical approach.

Specific improvement strategies in this area included:

- Audit and survey of the use and efficacy of the Oxford Mathematics text and assessment books as a classroom teaching resource.
- Engaging Mrs Sheila Griffin, Numeracy Consultant from AISWA, to deliver Professional Learning to all staff in Number and Place Value.
- Staff representatives met with Mrs Griffin to plan a whole school approach to the quality teaching of Mathematics. Falcon Primary School initiated a three-year journey with the Association of Independent Schools of WA (AISWA) to fully implement the SCSA Teaching & Learning Exemplars in Mathematics with a specific focus on Number and Place Value, to provide students with a solid foundation for learning future mathematical concepts.
- Staff representatives worked to adapt SCSA Year Level Scope & Sequence Exemplars to suit Falcon Primary context. This included space for staff to add resources developed through our Professional Learning sessions with AISWA.
- Staff representatives continue to work on adapting planning documents which will inform staff of P-6 Scope & Sequence, Term by Term Interleaved Learning Overview, Yearly Overview, Exemplars and Judging Standards.
- A revised assessment schedule has been established and collaborative DOTT timetabled to ensure staff meet to create common assessment tasks and to moderate results, using data for future teaching and learning cycles.
- The advertisement of an Expression of Interest for a Math Lead role in 2024, with a leadership allocation of 0.2 FTE.
- Establishment of a Math Committee for 2024, whereby representatives from K-6 will collaborate to ensure the full implementation of the SCSA documents, as well as a full audit of Math resources into a central store facility.
- The Math Committee is committed to developing a Falcon Primary structure for Numeracy blocks and specific lesson outline, using an Explicit Instruction model as well as incorporating the Concrete, Pictorial and Abstract approach to delivering content.





# Visual Arts

In 2023, the Visual Arts program was delivered to students in Pre-Primary to Year six by our Visual Arts Specialist, Mrs Julie Driver.

**Creativity flourished throughout the school both in and out of the classroom.**

- Many students chose to spend their Health & Wellbeing sessions expressing their thoughts artistically on paper.
- The Art Room was a popular space for students of all ages to relax during lunch and recess breaks. Some chose this time to complete tasks, others just wanted to relax by drawing freely. Many took the theme/ focus of art sessions home to share with loved ones.
- Healthy competition set the tone at the beginning of the year with over 500 students involved in decorating their art folder. Choosing winners from each year level was both exciting and tough going. Prizes, consisting of art materials and visual diaries were gratefully received by the worthy budding artists.
- To showcase the talents of our Falcon Primary School students, work was entered in the Shaun Tan Award for Young Artists held at the Subiaco Library. Thousands of Western Australian students submitted their creative works and although we were not selected as prize-winners, the experience was truly well worthwhile.
- To complement our fantastic Japanese Language program, students in Term one drew, painted, folded and designed all things Japanese. Students discovered that Art is a wonderful vehicle to explore culture and history.
- Mrs Annels sent on the details of an important project through Keep Australia Beautiful to design stickers for our bins. Students took on this environmental task with gusto and the results are now evident around our school. The message is clear for all to see..." Keep FPS clean!"
- NAIDOC week provided an opportunity to concentrate on brightening up the tile murals on the outside of the library building with Aboriginal dot painting designs. These were in keeping with the Aboriginal Six Seasons Garden nearby. The goanna and dragonfly were chosen because they symbolise new development, adaptability and courage. The turtle is seen by many cultures around the world as a symbol of longevity and stability. It also links to our wonderful Pre-Primary Sea Turtles class.
- Pre-Primary and Year 6s were involved in a recycling activity which was to decorate a shopping bag with Winnie the Pooh designs for their ' buddies' in Penguins. The students, both big and small really enjoyed this sharing experience.
- It was delightful for Visual Arts to be able to play a part in many school events such as RU OK? Day, Walk Safely to School Day, Assemblies and Special Ceremonies. Artwork from students across all grades helped to brighten and decorate backdrops on stage, in the Administration foyer, around the library, on windows and in classrooms. Events, such as RU OK? Day also gave an opportunity for local artists to showcase their skills to our wider school community.



# Technologies

**In 2023 Falcon Primary School continued to develop ICT resources and infrastructure to ensure our students have access to contemporary tools to assist learning.**

Digital Technology was provided to students in Pre-Primary to Year 2 as a specialised subject taught by Miss Rhodes, to support the ongoing development of Falcon Primary School's Digital Technologies program.

## **Highlights for 2023 include:**

- Student development of knowledge and understanding, with an understanding for digital systems, software and hardware including desktop computers and ipads.
- Student development of process and production using digital systems. Enabling students to develop and participate with confidence using digital devices to apply their knowledge to produce work samples, data and information.
- Students participated collaboratively and independently to code, using a range of coding resources such as, code.org and Bee Bots rechargeable floor robots.
- Two additional Bee Bot hives were purchased as additional resources for coding to support student participation on a 1:1 ratio per class.





# Performing Arts

In 2023 students were provided with a range of curricular and extra curricular opportunities in the Performing Arts Learning Area.

Facilitated by Music Specialist teacher Abbid Chaudhry, our Music program catered for students from Pre-Primary to Year 6.

In addition, hundreds of students from across these year groups took to the stage for various performances at both the school and region level. Students have been able to develop not only their music and drama skills, but perform in front of live audiences enabling them to develop confidence on stage.

## Highlights from the 2023 year include:

- Drama Club and Choir Club with over 200 students involved.
- Choir Club Y2-3 attracted 50 students.
- Choir Club Y4-6 attracted 60 students.
- Western Australia Government Schools Music Society (WAGSMS) Mandurah concert series at the Mandurah Performing Arts Centre with choir, duet and solo acts including the Aladdin Megamix and 80s Megamix.
- Mr Chaudhry receiving a certificate of commendation from the Director General of Education for coordinating WAGSMS.
- Senior Choir "A Flatters" performing at the Celebratory Assembly and Graduation Ceremony.
- Aladdin Junior school production combining Drama and Music across two evenings involving 150-200 students and attended by parents and the wider community including Lisa Munday MLA.
- Partnerships with Halls Head College which contributed to the set design for Aladdin.
- Partnerships with Stray Cats and Primadonna Drama Schools allowing for costume and scenery use for Aladdin.
- Charity collection for local charities of non perishable food items and toys as the entry fee for the Aladdin performances.
- Silver Threads Band Incursion.
- School of Instrumental Music provided in school tuition for students in clarinet, flute and brass.
- Out of hours tuition was provided to students on site by PMI for guitar, drums, vocal, ukulele, bass and electric guitar.
- Whole school songs rehearsed and performed at student assemblies.
- House Faction dance warm up at the Athletics Carnival.
- Year 6 PA monitors supported live events.
- New sound system in the undercover area.





# Physical Education

Physical Education continued to be a specialist subject in 2023 with Mr Jesse Hickman teaching this area of the curriculum.

All students in years K – 6 participated in the appropriate level of physical activity each week, in line with DOE policy. Our students participated in a wide range of activities that included sporting and leisure activities.

Particular highlights for 2023 include:

- Participating in the Interschool League Tag carnival for the first time.
- A successful year of the Smelly Shoe Club running program before school.
- A successful year for Senior Block sport enabling students to engage and participate in a range of different sports and activities.
- Participating in the Interschool Dockers cup for the first time. This was a great opportunity for our female students to play football and they all played so well!
- Participating in Interschool Winter Sport and lightning carnivals.
- Participating and coming 2nd place in A Division Cross Country.
- The implementation of the new Faction Cross Country and Faction Athletics Carnivals programs.
- Participating in the Interschool Basketball Carnival, which saw the participating students love basketball and decide to play outside of school.
- BRINGING THE A DIVISION ATHLETICS CHAMPIONSHIP HOME TO FALCON. Commendation to the Interschool teams, who had the motivation to train every day leading up to the carnival. That work paid off.
- Even though it was on a Pupil Free Day, we still participated in the Lawn Bowls and Cricket carnival. Commendation to the students who gave up their day off to come and represent Falcon Primary School.
- The implementation of the Year 6 students v Teacher Games. Well Done to the Teachers for being the overall winners!



# Science

In 2023, every student from Pre-Primary to Year 6 was taught Science by our specialist Science teacher, Mrs Meridith Lake.

The Science room was upgraded with furniture and storage and, in 2024, using the Science grant, additional technology and resources to enhance student learning, will be purchased.

In line with the Western Australian Curriculum, Science was taught across three interrelated strands: Science Understanding, Science as a Human Endeavour and Science Inquiry Skills. The Science Understanding strand is comprised of four sub-strands: Biological Sciences, Chemical Sciences, Physical Sciences and Earth and Space Sciences. These are taught on a rotational basis over 2 years.

Children learn better by doing; therefore the Scientific Inquiry process is at the heart of our Science teaching. Students identify investigable questions, make predictions, carry out investigations, record, interpret and analyse data and communicate their findings to others.

## Investigations carried out in 2023 include:

- Pre Primary: Weather and Shadows.
- Year 1: 5 Senses.
- Year 2: Float and Sink.
- Year 3: Thermometers, Shadows and Insulators.
- Year 4/5: Thermometers, Gravity and Magnetism.
- Year 6: Earthquakes, Dissolving Particles and Electrical Circuits.

Students continued to develop a set of minimum standard skills and expectations appropriate to their age and abilities. The lesson format includes daily review and warm-up activities, and lessons are taught explicitly when applicable.

Student learning was further enhanced during 2023 through participation in NAIDOC week activities focussing on Science, an incursion by the Water Corporation focussing on conserving water, participation in The Silly Scientist incursion funded by the Science budget/school and the use of resources from the Peel Harvey Biosecurity Group to learn about feral animals and their impact on the environment.



# Environmental Science

**In 2023 our Environmental Science initiative continued to grow with Mrs Bridget Annels as the coordinator.**

**Strategies and Highlights in Environmental Science for 2023 were.**

- We became a Wastesorted Accredited School and completed a waste audit to see how much and what sort of waste we were producing as a school.
- We implemented our Eco Warriors, which has grown from 12 students from years 3 - 6 to over 30. Their responsibilities include educating their peers, audits of our general waste and recycling, worm, composts, gardens and much more.
- With the support of the Eco Warriors, we designed and started Falcon's Waste Station where we recycle/collect/reuse foil, glad wrap and bags, plastic bottle lids, bread clips, batteries, eyeglasses, oral care, old pens, printer cartridges, newspapers, unwanted uniforms, and collect containers for cash.
- We implemented weekly Waste Free Wednesdays to help reduce the amount of packaging that the students were using. Each week a Junior and Senior class who had the most students who are waste free received a healthy platter as their reward.
- We even had our fantastic sports teacher get involved by becoming 'Captain Clean-up', making regular appearances to help motivate the students to be waste free.
- The communication of Environmental learning activities, news and information to the whole school community utilising different formats.
- We became a Junior Landcare School, winning a \$1000 grant that helped to improve our school garden and grounds.
- Using the Woolworths Junior Landcare Grant, we were able to provide a vegetable garden in the ECE area as well as their own worm fridge farm and kid friendly compost tumbler.
- Senior Eco Warriors work alongside the early childhood students to process their crunch and sip scraps for the worms and composter and collect the worm juice. This is called 'Kids teaching Kids', which was a very important component of our program.
- We increased the amount of garden beds in our school garden so now every class can grow their own produce.
- We adopted Avalon Bay as our local beach through the Mandurah City Council and during our annual Dune restoration excursion to Avalon beach with the 'Men of Trees' some classes removed over 35kgs of rubbish.
- After attending a Sustainability in Schools breakfast with Lisa Munday MLA in 2022, Mrs Munday visited again in 2023 to see what we had changed at Falcon P.S. She was so proud of what we had achieved, chatting with the Eco Warriors and we were very honoured to receive a certificate acknowledging our success and some Bunnings vouchers which were used to buy more vegetable seedlings.
- Mrs Munday then invited Mrs Bridget Annels, who is the Environmental Science Coordinator, to attend an Environmental Expo at Port Bouvard Surf Life Saving Club to showcase what the Eco Warriors had been doing at Falcon P.S. in 2023.
- Mrs Annels successfully attained a Wastesorted School Grant of \$2543.32 to acquit in 2024 to make improvements in the school's garden program by purchasing four compost bins, food scrap buckets, gardening gloves and tools, carbon rich materials for composting and worm farming and vertical garden beds.



# Student Support

In 2023, Falcon Primary School's Student Support Team was created as well as a comprehensive review and audit of all policies and procedures to support our Students at Educational Risk.

Facilitated by our Student Support Coordinator Mrs Karyn Mort, all processes were transformed into a streamlined, electronic collection of data, ensuring staff could maintain objective and evidence-based records with best student outcomes in mind.

Strategies to support this overhaul, included:

- The establishment of a Student Support Operational Plan.
- An update and streamlining of the Students at Educational Risk policy.
- The development of a Student Support Team referral flowchart for staff to reference when addressing student concerns.
- The creation of a user-friendly referral form for submission to the Triage team.
- Establishing a whole school tracking spreadsheet, providing details of the profile of all students for transitioning from year to year.
- Supporting staff with the uptake of SEN Planning and Reporting.
- The introduction of a Documented Plan Overview sheet to collect whole school data on students receiving intervention other than ODTP.
- The update of Case Conference protocols including a comprehensive Initial Case Conference Checklist to gather background evidence of new students.
- The use of Chronicle Entries in Compass as a way of referring to School Chaplaincy Services and for staff to create electronic entries for anecdotal purposes.
- Supporting staff with Documented Plan writing, including the creation of Functional Behavioural Assessments, Prevent Teach Reinforce documents and Escalation Profiles.
- Initiating the use of Department Transition documents to assist students at educational risk move from end of year to beginning of year.
- The audit of SAER resources with the commencement of a comprehensive visual guide of all materials available to staff and students.
- The initiation of a handover meeting for staff to pass on valuable information to the 2024 teachers.







# Student Wellbeing

**2023 saw the implementation of some new initiatives and the continuation of existing programs and events to provide students with strategies to develop their physical and emotional health and wellbeing.**

- A designated Wellbeing Action Team was formed with representation across the school including K-6 teachers, education assistants and executive members.
- Feedback from student, parent and staff surveys was used to plan for and review school wide initiatives and community events.
- Whole school community events designed to bring families together and provide opportunities for connection were well attended and responses were positive.
- Harmony Day incorporated a whole school assembly and a lunchtime family picnic.
- RUOK? Day saw the introduction of our first Parent Expo with community members and allied health services hosting displays and providing information about their services to parents. Lisa Munday (MLA) attended and generously provided morning tea for the parents.
- Social and Emotional skills were explicitly taught across classrooms through Zones of Regulation and Smiling Mind.
- We continued our partnership with SDERA (School Drug Education and Road Awareness) and became members of the 'Your Move' Network to promote active means to get to and from school. Funding received was used to provide Year 4 students with a series of Bike Education lessons incorporating a bike ride around the local community.
- A whole school assembly promoted Walk Safely to School Day with a special visit from Izzy and Tania Gigg from SDERA.

# Target Achievement 2023

At or Above Target	Near target; On Track; and/or Implementation Plan Commenced	Below Target	Data Not Yet Available; Implementation Plan Not Yet Commenced
--------------------	---	--------------	---

<b>Strategic Direction: High Quality Teaching</b> <b>Literacy &amp; Numeracy</b>	1.	Year 3 NAPLAN comparative performance will equal or exceed Like School performance in all NAPLAN domains															
	2.	Year 5 NAPLAN comparative performance will equal or exceed Like School performance in all NAPLAN domains															
<b>Strategic Direction: High Quality Teaching</b> <b>Technologies (Integrated STEM approaches)</b>	1.	Maintain a 1:4 student ratio of devices throughout the school.															
	2.	Introduce opportunities for creative exploration through integration of D&T with Digital Technology with a focus on STEM and HOTS.															
	3.	Integrate sustainability at Falcon PS through three focus areas curriculum, operations and infrastructure.															
<b>Strategic Direction: High Quality Teaching</b> <b>Early Childhood</b>	1.	By mid year 1, 75% of students will achieve 90% accuracy with Set 1 of the Phonics Initiative assessment	74%														
	2.	By mid year 1, 50% of students will achieve 90% accuracy with Set 2 of the Phonics Initiative assessment	23%														
	3.	By the end of Year 2, 80% of students will achieve Phase 5 of Letters and Sounds.	41%														
	4.	To develop a statement of Early Education Philosophy, with collaboration between teaching staff and Administration, that supports the development and implementation of high-quality play-based and explicit pedagogy that is inclusive of incremental, developmentally appropriate practices.															
<b>Strategic Direction: Safe, Healthy and Resilient Learners</b> <b>Safe and Supportive Learning Environment</b>	1.	To maintain the National Education Initiative in Mental Health and become a “Be You” (Kismatter) school by 2024.															
	2.	To improve the percentage of staff / parents opinion on meeting the Social and Emotional Needs of our students (65% of staff and 72% of parents in agreeance).	88% staff 86% parents														
	3.	The number of students judged by their teachers as demonstrating (consistently and often) positive attitude, behaviour and effort will be at least 80% of each cohort (to align with PBS Universal Tier 1).	90%														
	4.	To maintain student attendance rate equal to or above WA Public Schools attendance percentages for all Year levels from PP – Year 6.	<table border="1" style="display: inline-table; border-collapse: collapse;"> <tr> <td>P</td><td>1</td><td>2</td><td>3</td><td>4</td><td>5</td><td>6</td> </tr> <tr> <td style="background-color: #90ee90;"></td><td style="background-color: #90ee90;"></td><td style="background-color: #90ee90;"></td><td style="background-color: #90ee90;"></td><td style="background-color: #90ee90;"></td><td style="background-color: #90ee90;"></td><td style="background-color: #ff0000;"></td> </tr> </table>	P	1	2	3	4	5	6							
	P	1	2	3	4	5	6										
5.	To increase the percentage of students attending regularly from Semester 1 2023 to Semester 1 2024.	63.8%															
<b>Strategic Direction: Strong Partnerships and Collaboration</b> <b>Community Partnerships &amp; Relationships</b>	1.	Increase the number of responses to parent surveys—to have 50% of families responding by 2024.	150 responses														
	2.	Increase parent opinions through the parent opinion survey to ensure a greater number of parents feel heard, valued and have the opportunity to contribute to real change at the school	76%														
	3.	By 2024 75% or more responses agree/strongly agree to student behaviour is well managed.	85%														
	4.	Increase the “Students social/emotional needs are being met at this school” from results in 2022.	86%														
<b>Strategic Direction: Effective Leadership and Good Governance</b> <b>Leadership</b>	1.	Continue succession planning, provide opportunities for internal leadership pathways.															
	2.	Maintain distributed leadership model to enable whole staff ownership of working toward school vision.															
	3.	Utilise staff development days to develop staff expertise linked to performance management to provide opportunity for personal/professional growth.															
	4.	All staff participate in regular observations/feedback to support each other collaborative and improve teaching practice.															
	5.	Staff wellbeing shared responsibility of all school leaders.															



# Positive Behaviour Schools (PBS)

Falcon Primary School continued implementing PBS with the purpose of establishing a school climate in which appropriate behaviour is the norm for all students.

Falcon's WA 'positive behaviour' purpose is to build and foster a positive learning environment and positive school culture for our students, through consistent whole school PBS language and teaching of explicit positive behaviour expectations.

It is our intention that WA PBS will lead to improved behaviour and higher educational outcomes for all students.

## Specific highlights in 2023 included:

- The creation of our PBS expected behaviours matrix that breaks down each expectation into key skills that students are taught explicitly.
- A student mascot competition whereby the winning designs were curated by a graphic designer and became our school PBS mascots.
- The development of visuals to promote our four key expectations.
- The design and purchase of four PBS flags which include our mascots and behaviour expectations.
- The creation of a whole school behaviour focus schedule for explicit teaching.
- The design of explicit lesson plans to support teachers in the implementation of expected behaviours.
- The creation and implementation of a PBS app to record and reward positive student behaviour across the school.
- The upskilling of teachers in the use of PBS and the common language of the matrix and expectations.



**Show Respect | Own Responsibility | Act Safely | Rise with Resilience**

# School Culture Survey

Rating  
out of 5

<b>School Culture Survey: Relationships</b>	
I feel well informed about the activities of this school	4.1
I am provided with opportunities to actively engage in my children's education	3.9
I am comfortable to approach the school to discuss my children's needs and progress	4.2
The staff care about my children	4.2
Teachers at our school are professional and committed and enthusiastic	4.3
Staff and students at this school respect each other	3.9
Staff have positive relationships with Aboriginal students, their families and the local Aboriginal Community	3.7
I feel like the staff are working with me in preparing my children for the next stage of their education	4.0
I feel welcome in my children's classrooms	4.3
The school recognises students for their progress and achievements	4.1
The school values the role of parents as partners in education	4.0
I feel welcome when I am in the school	4.2
I am made to feel welcome when I am in the front office	4.2
Our school council/board operates effectively	3.7
Our school council/board is representative of our school community	3.7
Our school council/board values the opinion of the community when big decisions need to be made	3.6
<b>School Culture Survey: Teaching Quality</b>	
The staff have a common approach to how students are taught	3.8
Teachers ask me about my aspirations for my child, family and community	3.4
The schools teaching and learning programs meet the needs of my children	3.8
Teachers provide me with feedback about my children's achievement and progress	4.1
The school staff understand and respect my children's cultural background	4.0
The schools' teachers create learning experiences that are culturally responsive and connect to the local context	4.0
Our teachers have a thorough understanding of what they teach	4.2
<b>School Culture Survey: Learning Environment</b>	
Student wellbeing and care is a priority at our school	4.0
My children's teachers provide a stimulating learning environment & make learning opportunities interesting & enjoyable	4.2
I understand how my children's classrooms operate	3.9
Our school creates and sustains a culturally responsive and culturally safe learning environment	3.9
Our school is a safe place to be	4.1
My children have a strong sense of belonging and pride in our school	4.1
My children are well known by school leaders and staff	3.9
Our school has a culture where mutually respectful relationships are promoted and valued	4.0
Our school is responsive to the voice of Aboriginal students, staff and communities	3.8
There are effective pastoral care processes in our school	3.5
Our school facilitates contemporary learning environments through the use of learning technologies	3.9
<b>School Culture Survey: Resources</b>	
The school uses available resources to improve student learning	4.0
I see the link between the schools planning and the way it allocates resources	3.6
I see the impact of the resources provided to staff	3.6
I see the impact of support provided for specific student needs	3.6
<b>School Culture Survey: Leadership</b>	
I believe our school is well led	3.8
If the school makes big decisions, they ask parents what they think	3.5
I have had opportunities to participate in school planning	3.4
The school communicates how decisions will support my children's learning	3.7
I frequently see school leaders around the school	3.8
School leaders model culturally responsive leadership behaviours	3.7
The whole school communication processes are well established	3.9
<b>School Culture Survey: Student Achievement &amp; Progress</b>	
My school sets high expectations for my children's learning	3.9
I understand how the school uses evidence for school planning	3.7
The school regularly reports on whole school student achievement and progress, whole school NAPLAN results, attendance	3.9

# NAPLAN Data 2023 Falcon Primary School

## Targets:

- Year 3 NAPLAN comparative performance will equal or exceed Like School performance in all NAPLAN domains.
- Year 5 NAPLAN comparative performance will equal or exceed Like School performance in all NAPLAN domains.

Please note in 2023 NAPLAN testing moved from May to March and the NAPLAN scale was reset. This means you can't compare NAPLAN achievement prior to 2023 to that from 2023 onwards.

## YEAR 3 Percentage of students in each Proficiency Level Numeracy

Proficiency Level	NAPLAN Score Range	YEAR 3 NUMERACY			<ul style="list-style-type: none"> <li>• There are no Year 3 students performing at the highest proficiency level (Exceeding) in Numeracy.</li> <li>• A higher proportion of students need additional support in Year 3 Numeracy.</li> <li>• Overall Falcon PS is performing below Like Schools in Year 3 Numeracy.</li> </ul>
		School	Like Schools	WA Public Schools	
		2023	2023	2023	
Exceeding	493 and above	0%	8%	11%	
Strong	378 - 492	55%	54%	50%	
Developing	311 - 377	28%	26%	24%	
Needs Additional Support	310 and below	17%	11%	14%	

## YEAR 3 Percentage of students in each Proficiency Level Reading

Proficiency Level	NAPLAN Score Range	YEAR 3 READING			<ul style="list-style-type: none"> <li>• There are similar numbers of Year 3 students performing at the highest proficiency level (Exceeding) in Reading when compared to Like Schools.</li> <li>• There are less students performing within the Strong proficiency level for Year 3 Reading.</li> <li>• A higher proportion of students need additional support in Year 3 Reading.</li> <li>• Overall Falcon PS is performing below Like Schools in Year 3 Reading.</li> </ul>
		School	Like Schools	WA Public Schools	
		2023	2023	2023	
Exceeding	481 and above	13%	14%	16%	
Strong	368 - 480	39%	46%	45%	
Developing	282 - 367	27%	27%	24%	
Needs Additional Support	281 and below	21%	13%	14%	

## YEAR 3 Percentage of students in each Proficiency Level Writing

Proficiency Level	NAPLAN Score Range	YEAR 3 WRITING			<ul style="list-style-type: none"> <li>• There are lower numbers of Year 3 students performing at the highest proficiency level (Exceeding) in Writing when compared to Like Schools.</li> <li>• There are less students performing within the Strong proficiency level for Year 3 Writing.</li> <li>• There are more students within the Developing proficiency level for Year 3 Writing.</li> <li>• A similar proportion of students need additional support in Year 3 Writing.</li> <li>• Overall Falcon PS is performing below Like Schools in Year 3 Writing.</li> </ul>
		School	Like Schools	WA Public Schools	
		2023	2023	2023	
Exceeding	503 and above	5%	7%	9%	
Strong	370 - 502	66%	70%	65%	
Developing	296 - 369	21%	16%	14%	
Needs Additional Support	295 and below	8%	7%	10%	

## YEAR 3 Percentage of students in each Proficiency Level Spelling

Proficiency Level	NAPLAN Score Range	YEAR 3 SPELLING			<ul style="list-style-type: none"> <li>• There are lower numbers of Year 3 students performing at the highest proficiency level (Exceeding) in Spelling when compared to Like Schools.</li> <li>• There are less students performing within the Strong proficiency level for Year 3 Spelling.</li> <li>• A higher proportion of students need additional support in Year 3 Spelling.</li> <li>• Overall Falcon PS is performing below Like Schools in Year 3 Spelling.</li> </ul>
		School	Like Schools	WA Public Schools	
		2023	2023	2023	
Exceeding	489 and above	10%	12%	15%	
Strong	380 - 488	39%	45%	42%	
Developing	294 - 379	36%	32%	28%	
Needs Additional Support	293 and below	15%	11%	13%	

## YEAR 3 Percentage of students in each Proficiency Level Grammar & Punctuation

Proficiency Level	NAPLAN Score Range	YEAR 3 GRAMMAR & PUNCTUATION			<ul style="list-style-type: none"> <li>• There are lower numbers of Year 3 students performing at the highest proficiency level (Exceeding) in Grammar &amp; Punctuation when compared to Like Schools.</li> <li>• There are more students performing within the Developing proficiency level for Year 3 Grammar &amp; Punctuation when compared to Like Schools.</li> <li>• A higher proportion of students need additional support in Year 3 Grammar &amp; Punctuation.</li> <li>• Overall Falcon PS is performing below Like Schools in Year 3 Grammar &amp; Punctuation.</li> </ul>
		School	Like Schools	WA Public Schools	
		2023	2023	2023	
Exceeding	523 and above	3%	6%	8%	
Strong	404 - 522	44%	42%	42%	
Developing	312 - 403	31%	36%	30%	
Needs Additional Support	311 and below	21%	16%	18%	

## 2023 Average NAPLAN Achievement

	Reading		Writing		Spelling		Grammar		Numeracy	
	School	Like School	School	Like School	School	Like School	School	Like School	School	Like School
Year 3	371	388	400	405	375	389	387	395	381	393

## YEAR 5 Percentage of students in each Proficiency Level Numeracy

Proficiency Level	NAPLAN Score Range	YEAR 5 NUMERACY			<ul style="list-style-type: none"> <li>• There are less Year 5 students performing at the highest proficiency level (Exceeding) in Numeracy.</li> <li>• A higher proportion of students are within the Developing proficiency in Year 5 Numeracy.</li> <li>• A lower proportion of students need additional support in Year 5 Numeracy.</li> <li>• Overall Falcon PS is performing below Like Schools in Year 5 Numeracy.</li> </ul>
		School	Like Schools	WA Public Schools	
		2023	2023	2023	
Exceeding	577 and above	2%	5%	11%	
Strong	451 - 576	53%	54%	53%	
Developing	386 - 450	35%	28%	23%	
Needs Additional Support	385 and below	10%	13%	12%	

## YEAR 5 Percentage of students in each Proficiency Level Reading

Proficiency Level	NAPLAN Score Range	YEAR 5 READING			<ul style="list-style-type: none"> <li>• There are similar numbers of Year 5 students performing at the highest proficiency level (Exceeding) in Reading when compared to Like Schools.</li> <li>• There are less students performing within the Strong proficiency level for Year 5 Reading.</li> <li>• A higher proportion of students are within the Developing proficiency level in Year 5 Reading.</li> <li>• A higher proportion of students need additional support in Year 5 Reading.</li> <li>• Overall Falcon PS is performing below Like Schools in Year 5 Reading.</li> </ul>
		School	Like Schools	WA Public Schools	
		2023	2023	2023	
Exceeding	555 and above	12%	13%	18%	
Strong	448 - 554	50%	55%	51%	
Developing	377 - 447	25%	22%	18%	
Needs Additional Support	376 and below	13%	11%	11%	

## YEAR 5 Percentage of students in each Proficiency Level Writing

Proficiency Level	NAPLAN Score Range	YEAR 5 WRITING			<ul style="list-style-type: none"> <li>• There are no students performing at the highest proficiency level (Exceeding) in Writing when compared to Like Schools.</li> <li>• There are more students performing within the Strong proficiency level for Year 5 Writing.</li> <li>• There are more students within the Developing proficiency level for Year 5 Writing.</li> <li>• A smaller proportion of students need additional support in Year 5 Writing.</li> <li>• Overall Falcon PS is performing below Like Schools in Year 5 Writing.</li> </ul>
		School	Like Schools	WA Public Schools	
		2023	2023	2023	
Exceeding	570 and above	0%	5%	10%	
Strong	455 - 569	60%	55%	54%	
Developing	385 - 454	33%	26%	22%	
Needs Additional Support	384 and below	8%	14%	12%	



## YEAR 5 Percentage of students in each Proficiency Level Spelling

Proficiency Level	NAPLAN Score Range	YEAR 5 SPELLING			<ul style="list-style-type: none"> <li>• There are significantly lower numbers of Year 5 students performing at the highest proficiency level (Exceeding) in Spelling when compared to Like Schools.</li> <li>• There are more students performing within the Strong and Developing proficiency levels for Year 5 Spelling.</li> <li>• A lower proportion of students need additional support in Year 5 Spelling.</li> <li>• Overall Falcon PS is performing below Like Schools in Year 5 Spelling.</li> </ul>
		School	Like Schools	WA Public Schools	
		2023	2023	2023	
Exceeding	553 and above	2%	13%	20%	
Strong	451 - 552	52%	49%	48%	
Developing	378 - 450	37%	25%	20%	
Needs Additional Support	377 and below	10%	13%	11%	

## YEAR 5 Percentage of students in each Proficiency Level Grammar & Punctuation

Proficiency Level	NAPLAN Score Range	YEAR 5 GRAMMAR & PUNCTUATION			<ul style="list-style-type: none"> <li>• There are significantly lower numbers of Year 5 students performing at the highest proficiency level (Exceeding) in Grammar &amp; Punctuation when compared to Like Schools.</li> <li>• There are similar numbers of students performing within the Developing proficiency level for Year 5 Grammar &amp; Punctuation when compared to Like Schools.</li> <li>• A higher proportion of students need additional support in Year 5 Grammar &amp; Punctuation.</li> <li>• Overall Falcon PS is performing below Like Schools in Year 5 Grammar &amp; Punctuation.</li> </ul>
		School	Like Schools	WA Public Schools	
		2023	2023	2023	
Exceeding	582 and above	4%	9%	13%	
Strong	470 - 581	42%	43%	46%	
Developing	397 - 469	35%	33%	26%	
Needs Additional Support	396 and below	19%	16%	14%	

## 2023 Average NAPLAN Achievement

	Reading		Writing		Spelling		Grammar		Numeracy	
	School	Like School	School	Like School	School	Like School	School	Like School	School	Like School
Year 5	461	476	452	468	450	471	465	477	460	469

# Attendance Data 2023

## BUSINESS PLAN TARGETS:

- To maintain student attendance rate equal to or above WA Public Schools attendance percentages for all Year levels from Pre Primary to Year 6.
- To increase the percentage of students attending regularly from Semester 1 2023 to Semester 1 2024.

## IMPROVEMENT FOCI 2024:

- Set an improvement target for Regular attendance for Semester 1 2024, to meet Business Plan target.
- Increase strategies to improve Regular attendance.
- Increase strategies to improve unauthorised attendance.
- Increase monitoring of Year group attendance.
- Implement strategies for subgroup Year 5-6 attendance.

## ATTENDANCE OVERALL PRIMARY 2023

	Attendance Category				<ul style="list-style-type: none"> <li>Above Like Schools (1.8%) and WA Public Schools (2.8%) for <b>Regular</b> Attendance rate.</li> <li>Increase in <b>Regular</b> attendance in 2023 (12.1%) but not back to pre-COVID levels.</li> <li>Decrease in At Risk Indicated, At Risk Moderate and At Risk Severe categories in 2023.</li> </ul>
	Regular	At Risk			
		Indicated	Moderate	Severe	
2021	67.4%	22.1%	8.9%	1.7%	
2022	51.7%	32.4%	12.0%	3.9%	
2023	63.8%	27.2%	6.4%	2.5%	
Like Schools 2023	62.0%	26.9%	9.1%	2.0%	
WA Public Schools	61.0%	25.0%	10.0%	4.0%	

## ATTENDANCE OVERALL PRIMARY

	Non-Aboriginal			Aboriginal			Total			<ul style="list-style-type: none"> <li><b>Non Aboriginal rate</b> of attendance below Like Schools (-0.5%) and WA Public Schools (-0.3%).</li> <li><b>Aboriginal rate</b> of attendance above Like Schools (8.8%) and WA Public Schools (15.5%).</li> <li><b>Total rate</b> of attendance Above Like Schools (0.2%) and WA Public Schools (1.1%).</li> </ul>
	School	Like Schools	WA Public Schools	School	Like Schools	WA Public Schools	School	Like Schools	WA Public Schools	
2021	90.8%	92.1%	92.4%	83.1%	83.6%	76.8%	90.5%	91.6%	91%	
2022	87.7%	87.7%	88.3%	83.2%	79.1%	69.5%	87.6%	87.2%	86.6%	
2023	90%	90.5%	90.3%	89.8%	81%	74.3%	90%	89.8%	88.9%	

## ATTENDANCE % - PRIMARY YEAR LEVELS

	PPR	Y01	Y02	Y03	Y04	Y05	Y06	<ul style="list-style-type: none"> <li><b>Year level</b> attendance rates at or above WA Public Schools P-6.</li> </ul>
2021	91%	89%	92%	90%	90%	91%	90%	
2022	89%	89%	88%	88%	86%	84%	89%	
2023	88%	91%	91%	90%	91%	90%	89%	
WA Public Schools 2023	88%	89%	89%	89%	89%	89%	89%	

## ATTENDANCE CATEGORY PRIMARY AS AT SEMESTER 1, 2023

	PPR	Y01		Y02		Y03		Y04		Y05		Y06		
	School	WA Public School	School	WA Public School	School	WA Public School	School	WA Public School	School	WA Public School	School	WA Public School	School	WA Public School
Regular	62%	57%	66%	61%	62%	62%	64%	64%	75%	63%	56%	63%	59%	61%
At Risk - Indicated	27%	27%	27%	26%	33%	25%	28%	24%	18%	25%	32%	24%	27%	26%
At Risk - Moderate	7%	12%	5%	10%	4%	9%	5%	9%	5%	10%	11%	9%	9%	10%
At Risk - Severe	5%	4%	1%	3%	1%	3%	3%	3%	1%	3%	2%	4%	5%	3%

- Year level** Regular attendance rate at or Above WA Public Schools PP- Y4.
- Year level** Regular attendance rate below WA Public Schools Y5 - Y6.

## ATTENDANCE EXPECTATION BASED ON ICSEA

Primary Attendance	0.50	<ul style="list-style-type: none"> <li>Within half a standard deviation of the expected range for attendance.</li> </ul>
Attendance Rate 2023	90%	
% Regularly Attending (90% +) 2023	64%	

# Financial Data 2023

## INCOME

INCOME - Dec 2023 ( Verified Dec Cash)		
	Current Budget (\$)	Actual YTD (\$)
Carry Forward (Cash)	85,033	85,032
Carry Forward (Salary)	150,609	150,609
<b>STUDENT-CENTRED FUNDING</b>		
Per Student	4,288,644	4,288,644
School and Student Characteristics	833,808	833,808
Disability Adjustments	112,627	112,627
Targeted Initiatives	262,009	262,009
Operational Response Allocation	430	430
<b>Total Funds:</b>	<b>5,497,518</b>	<b>5,497,518</b>
<b>TRANSFERS AND ADJUSTMENTS</b>		
Regional Allocation	0	0
Transition Adjustment	0	0
School Transfers – Salary	(277,923)	(277,923)
School Transfers - Cash	276,680	276,680
Department Adjustments	0	0
<b>Total Funds:</b>	<b>(1,243)</b>	<b>(1,243)</b>
<b>LOCALLY RAISED FUNDS (REVENUE)</b>		
Voluntary Contributions	18,410	18,410
Charges and Fees	52,899	54,127
Fees from Facilities Hire	48,455	48,455
Fundraising/Donations/Sponsorships	26,366	22,474
Commonwealth Govt Revenues	0	0
Other State Govt/Local Govt Revenues	9,700	9,700
Revenue from CO, Regional Office and Other scho	0	0
Other Revenues	20,317	21,114
Transfer from Reserve or DGR	4,103	4,103
Residential Accommodation	0	0
Farm Revenue (Ag and Farm Schools only)	0	0
Camp School Fees (Camp Schools only)	0	0
<b>Total Funds:</b>	<b>180,250</b>	<b>178,383</b>
<b>TOTAL</b>	<b>5,912,167</b>	<b>5,910,299</b>

## EXPENDITURE

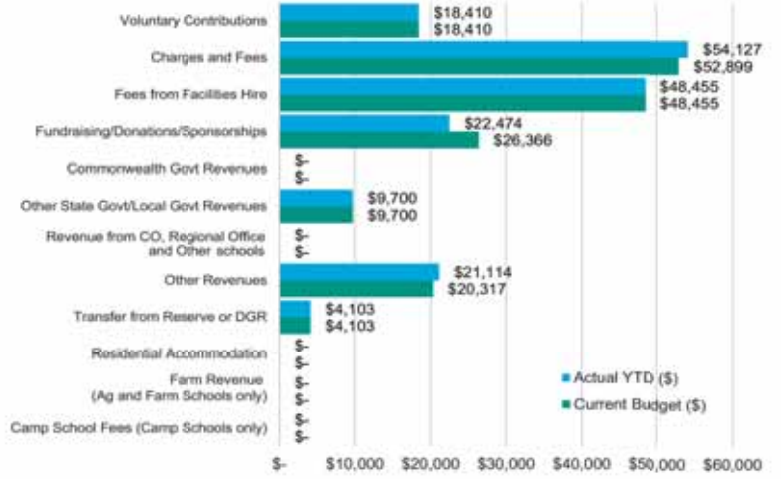
EXPENDITURE - Dec 2023 ( Verified Dec Cash)		
	Current Budget (\$)	Actual YTD (\$)
<b>SALARIES</b>		
Appointed Staff	4,520,241	4,520,241
New Appointments	0	0
Casual Payments	525,333	525,333
Other Salary Expenditure	226	226
<b>Total Funds:</b>	<b>5,045,800</b>	<b>5,045,800</b>
<b>GOODS AND SERVICES (CASH EXPENDITURE)</b>		
Administration	16,705	16,784
Lease Payments	20,864	19,650
Utilities, Facilities and Maintenance	118,681	106,033
Buildings, Property and Equipment	101,993	95,256
Curriculum and Student Services	249,454	188,277
Professional Development	35,000	23,873
Transfer to Reserve	66,200	66,200
Other Expenditure	5,450	5,615
Payment to CO, Regional Office and Other schools	0	0
Residential Operations	0	0
Residential Boarding Fees to CO (Ag Colleges only)	0	0
Farm Operations (Ag and Farm Schools only)	0	0
Farm Revenue to CO (Ag and Farm Schools only)	0	0
Camp School Fees to CO (Camp Schools only)	0	0
<b>Total Funds:</b>	<b>614,347</b>	<b>521,688</b>
<b>TOTAL</b>	<b>5,660,147</b>	<b>5,567,488</b>

## ONE LINE BUDGET STATEMENT

ONE LINE BUDGET - Dec 2023 ( Verified Dec Cash)		
	Current Budget (\$)	Actual YTD (\$)
Carry Forward (Cash):	85,033	85,032
Carry Forward (Salary):	150,609	150,609
<b>INCOME</b>		
Student-Centred Funding (including Transfers & Adjustments):	5,496,274	5,496,274
Locally Raised Funds:	180,249	178,382
<b>Total Funds:</b>	<b>5,912,165</b>	<b>5,910,298</b>
<b>EXPENDITURE</b>		
Salaries:	5,045,800	5,045,800
Goods and Services (Cash):	614,347	521,688
<b>Total Expenditure:</b>	<b>5,660,147</b>	<b>5,567,488</b>
<b>VARIANCE:</b>	<b>252,018</b>	<b>342,811</b>

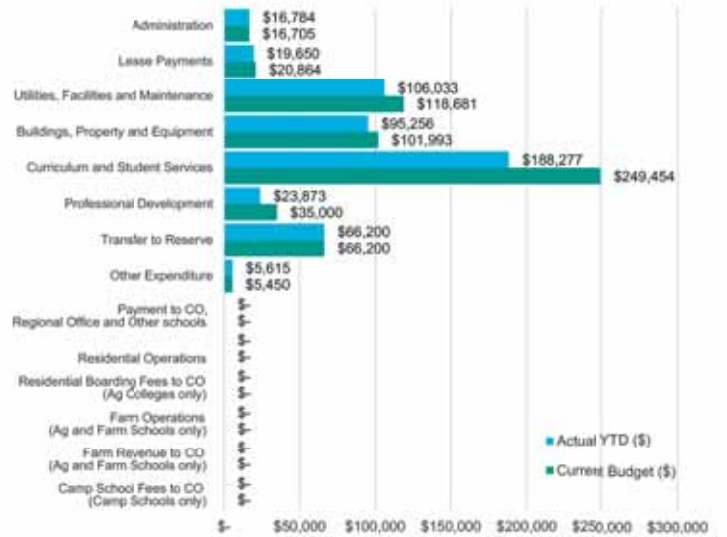
## LOCALLY GENERATED REVENUE: BUDGET VERSUS ACTUAL

DEC 2023 (VERIFIED DEC CASH)



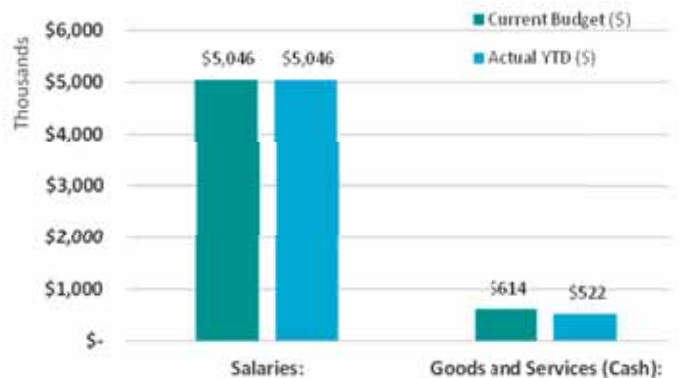
## GOODS AND SERVICES EXPENDITURE: BUDGET VERSUS ACTUAL

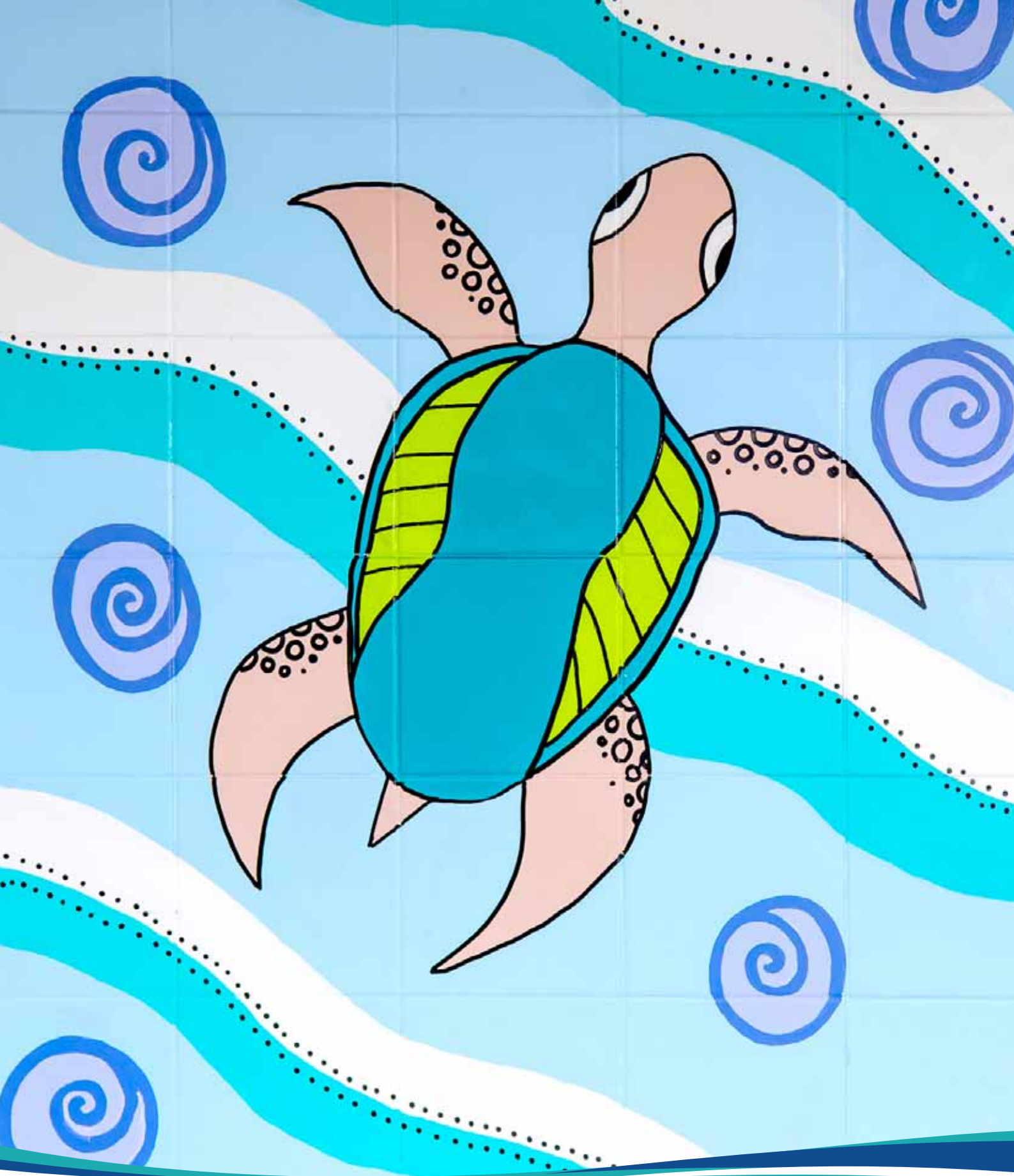
DEC 2023 (VERIFIED DEC CASH)



## GOODS AND SERVICES VERSUS SALARY EXPENDITURE

DEC 2023 (VERIFIED DEC CASH)





# Falcon Primary School

[falconps.wa.edu.au](http://falconps.wa.edu.au)

**Acknowledgement of Country** Falcon Primary School respectfully acknowledge the past and present traditional custodians of this land on which we learn, the Bindjareb Noongar people. It is a privilege to be learning on Bindjareb Noongar country. We also acknowledge the contributions of Aboriginal Australians and non-Aboriginal Australians to the education of all children and people in this country we all live in and share together - Australia.

**Principal** Ms Jacquié Abbiss | 30 Baloo Crescent, Wannanup | P.O. Box 5018, Falcon WA 6210 | **email** [falcon.ps@education.wa.edu.au](mailto:falcon.ps@education.wa.edu.au) | **ABN** 99 993 506 288